

Instructions for the HD camera Y3000

1, product structure



1. switch/on-off 2. recording 3. camera 4. indicator light 5. pattern 6. Filter mode key 7. lwlctg 8. Hanging rope buckle

一, lwlctg



figure1



2, turn it on /turn it off

The first step is to insert the TF card, press the boot key for 3 seconds, turn on the display screen, and boot into photo standby mode (figure1). Press the boot key for 3 seconds to shut down.

3, take pictures

1. In the state of figure 1, click the switch button to complete a photo shoot

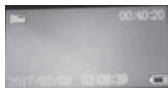


2. for mirror photography, click the filter mode key to select

figure2

The desired background (figure2) and press the switch key to complete the photo and save

4, video



Click the mode key (figure3) to enter video mode, click the switch button again to pause the video

5, play



Click the mode key (figure 4) to enter playback mode, In playback mode, the

machine clicks on the key playback. Press the mode key to select the next paragraph.

Long press mode ingot to return to photo mode

6, Reset

When the machine fails, hold down the mode key and press the boot key. Machine shutdown reset complete

7. parameters

project	Related specifications
Screen size	0.96inches
Video format	AVI
Video Resolution	1920*1080P
Photo Resolution	3760*2128
Video frame	30FPS
Picture format	JPG
Image Ratio	4:3
Battery capacity	180mAh
Working time	100min
Charging voltage	DC-5V
Storage	TFcard
Battery type	polymer

8. Charging instructions

It is charged with a 350~500mA charger or directly connect the computer port for charging. During charging, the battery symbol flashes and stops flashing when fully charged.

Note: Do not place them on the bed, under pillows or where children can reach them during charging.

Safety: This machine and its accessories may contain some small parts, please place them out of reach of children. It is forbidden to dismantle the camera without permission, and the consequences are borne.

Document backup: due to external or operation errors, the original files in the camera may be lost, please make the file backup in time.

Transmission: When the camera and computer data are in transmission, please do not disconnect the camera to prevent data loss. Thank you for buying and using it.