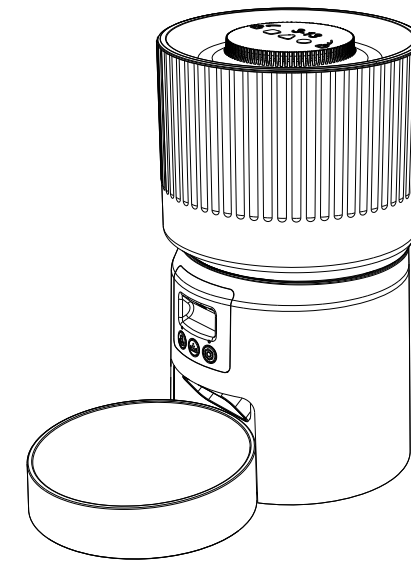


# Smart Feeder

Instruction Manual Smart Edition



Please Read the Manual Carefully Before Using the Product

## Safety Instruction

- Children need to be used in the company of adults.
- Do not use the feeder for pets who cannot reach the food tray or have physical disabilities.
- Do not immerse the foundation in water, which will damage electronic components such as the control panel.
- Do not place any foreign objects in the pet feeder.
- Do not place wet food or spoiled pet food in the feeder.
- Do not disassemble the equipment by yourself.
- Do not modify the pet feeder.
- If the equipment malfunctions or parts are damaged, do not repair the pet feeder by yourself, contact your seller immediately to solve the problem.
- Be sure to unplug the product when not in use or before cleaning it.
- If the equipment's power plug becomes wet, turn off the power at the outlet and do not attempt to unplug it.

## Notice

- Please do not let your pet to chew or swallow any of the accessories. If you are worried about damage to the power cord, please buy a cord conduit (hard plastic protector) at a hardware store to protect the cord.
- Do not place the feeder in the sun or in a place where the ambient temperature does not match, the normal operating ambient temperature of the feeder is 0 °C ~ 40 °C.
- Do not use rechargeable batteries, please use an alkaline Size D battery for the power supply.
- Check the battery regularly, be sure to replace the battery if you are traveling or on business.
- Do not lift the feeder directly by the lid, grain bucket and food basin. You need to hold the base with both hands to lift it and transport it, and be careful to unplug the power plug at the same time.
- Please use dry food with a pet food size range of 3-13 mm. Avoid food jams or blockage of the food outlet due to oversized food.
- Please read and follow all important instructions listed on the pet feeder and packaging carefully.

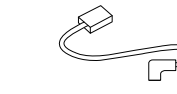
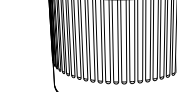
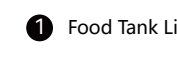
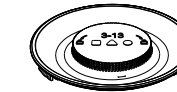
## Packing List

After opening the product package, please make sure the pet feeder is intact, please check the list to make sure the accessories are complete.

### Hosts



### Accessories



1 Food Tank Lid

2 Food Tank

3 Bottom of grain drum

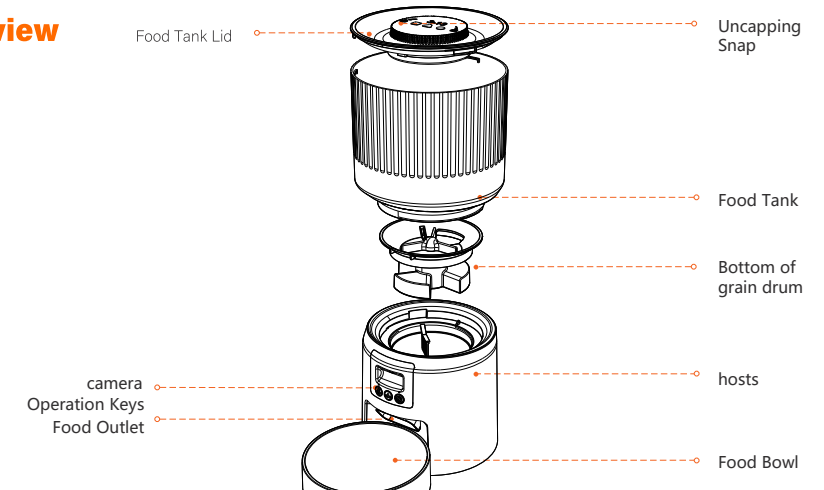
4 Food Bowl

5 The power adapter

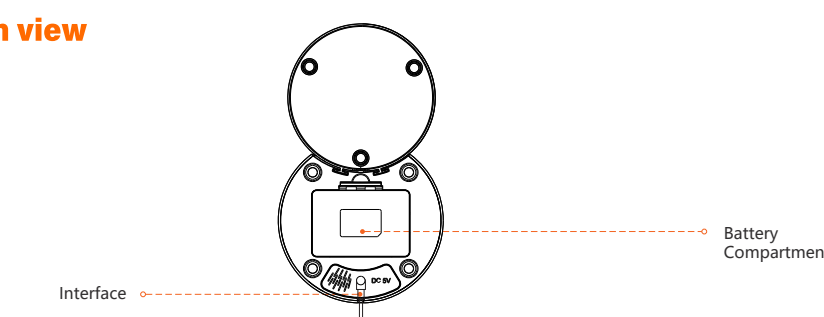
\* In order to provide better products, we regularly make product improvements. When the product picture is slightly different from the real thing, please refer to the real thing.

## Product Image

### Front view



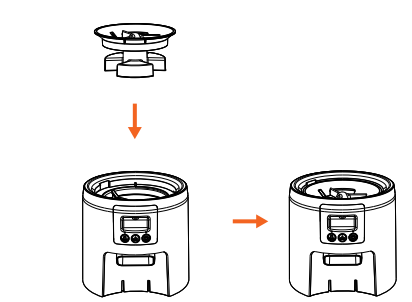
### bottom view



## Mounting Sequence

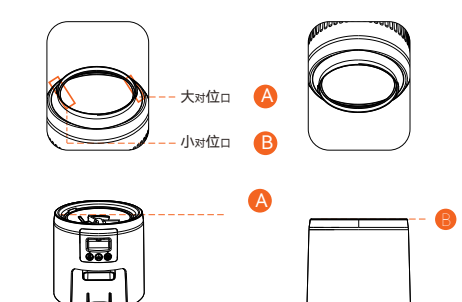
### (1) Installation of grain drum bottoms

Please put the bottom of the grain barrel into the base of the main unit correctly as shown in the illustration.



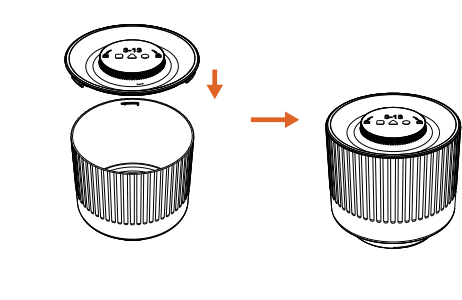
### (2) Installation of grain drums

Pay attention to the large (A) and small (B) alignment ports, and place them in the corresponding serial number position of the main unit.

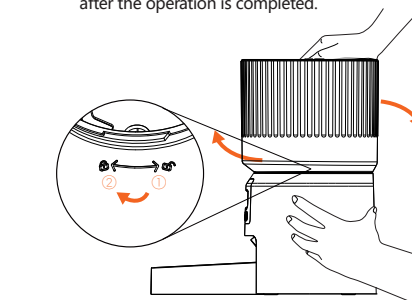


### (3) Installation of the food tank lid

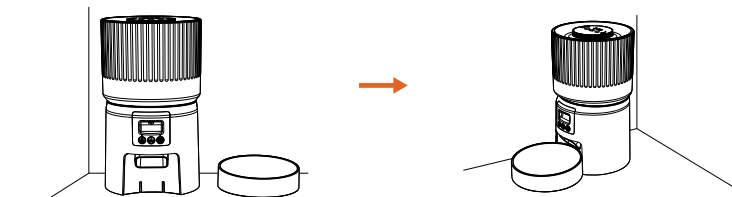
Pick up the lid with both hands, align it downwards with the buckle of the grain barrel, and press down firmly to complete the task.



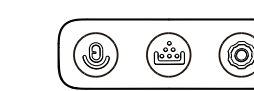
Put the bucket into the corresponding buckle track according to the illustration, align with the mark A and rotate clockwise from ② to ③ until you hear a click and tighten it, and then make sure the fastening is not loosened after the operation is completed.



## (4) Place the feeder base on a level surface with the food bowl stuck to the base.



## Key Description



- Recording button:** Long press for 1s until you hear "di" and start recording. The recording time does not exceed 10s. After you release your hand, you will hear "di" to indicate that it has been saved.
- Feeding button:** Press the button to dispense one serving, hold it for 4 seconds to lock, and then press and hold it for 4 seconds again to unlock with two beeps.
- Reset:** In the unlocked state, long press to clear all data. A "di" sound will be heard in 6 seconds, and the device will be restored to factory settings, network configuration information, feeding plan, feeding records, etc.

Indicator light color	Indicator light signal	Equipment status
White	Flashing	In the process of network distribution
	Ever-bright	Network connection successful
Red	Fast flashing	Lock key/Unlock (flashes 2 times) Power on (flashes for about 20 seconds, then turns off)
	Slow flashing	Low battery/Motor stalled
	Ever-bright	Battery powered

Note:  
When the equipment fails (low battery, motor blockage, insufficient grain residue, clogged grain outlet) App pushes exception alerts.

## Care Instructions

- Please clean the feeder regularly to keep your pet's health.
- When it starts to get dirty and a lot of loose food in the food trough, you can remove the food cover to clean it.
- Please use a soft damp cloth to clean the control panel and host base.
- Do not put the product in the dishwasher, otherwise it will be permanently damaged!

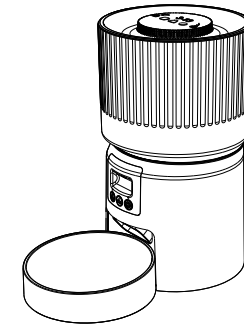
## Specification

Food Tank Capacity: 4L  
Power supply: DC 5V/1A power adapter; 3pcs alkaline batteries  
Power adapter: AC100-240V input, DC5V output  
G.W: 1.836kg  
Size: 185\*325\*320mm

## Instructions

### 01 | Installation

- Complete assembly in the order of installation.

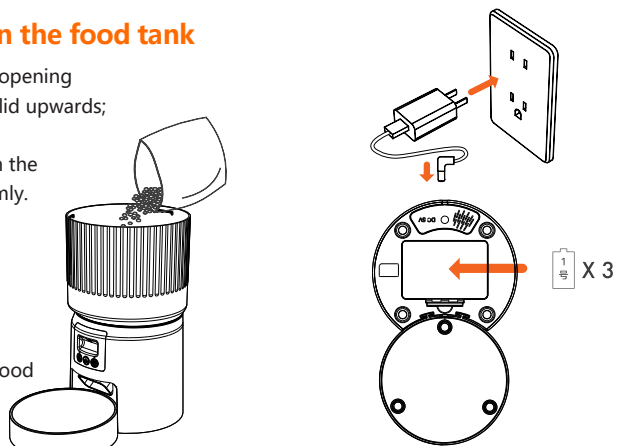


### 02 | Connect the power supply

- Plug the 5V/1A power adapter into an outlet and connect the unit.
  - After plugging in, and the LED light will light up, indicating that the feeder is powered on.
  - Open the battery compartment at the bottom of the feeder and install 3 pcs Size D Battery (not necessary) to prevent power failure.
- Note:  
1) Does not include battery  
2) Before turning on the power, make sure that all parts are clean and completely dry.

### 03 | Put pet food in the food tank

- Press and hold the lid opening button above to open the lid upwards;
- Pour in dry pet food;
- Close the lid, align with the buckle and press down firmly.

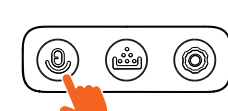


Note:  
1) Do not place canned, wet or wet pet food.  
2) The recommended pet food size range is 3-13 mm.

### 04 | Recording

- Press and hold the recording button for 1 second until you hear a "di" sound and start recording, and release the "di" to end the recording. The recording time can be up to 10 seconds, and each repetition of this process can change your recording.

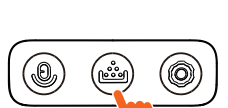
Note:  
1) It will only play when pressed when there is a recording.  
2) When it is time to feed, take out the food and play the recording 1 time.



### 06 | Feed

- Manual feeding: 1 portion of food is dispensed with a short press.

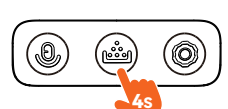
Attention:  
1) Please unlock the device before feeding.  
2) Feeding schedule will not be affected.



### 05 | Lock/Unlock

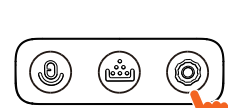
- Press the key for 4 seconds without operation, the key will be locked with a "di" sound, press and hold again for 4 seconds, the key will be unlocked with two "di".

Attention:  
1) Any button cannot be operated in the locked state, and it must be unlocked to be used normally.  
2) The locked state does not affect the operation of the App.

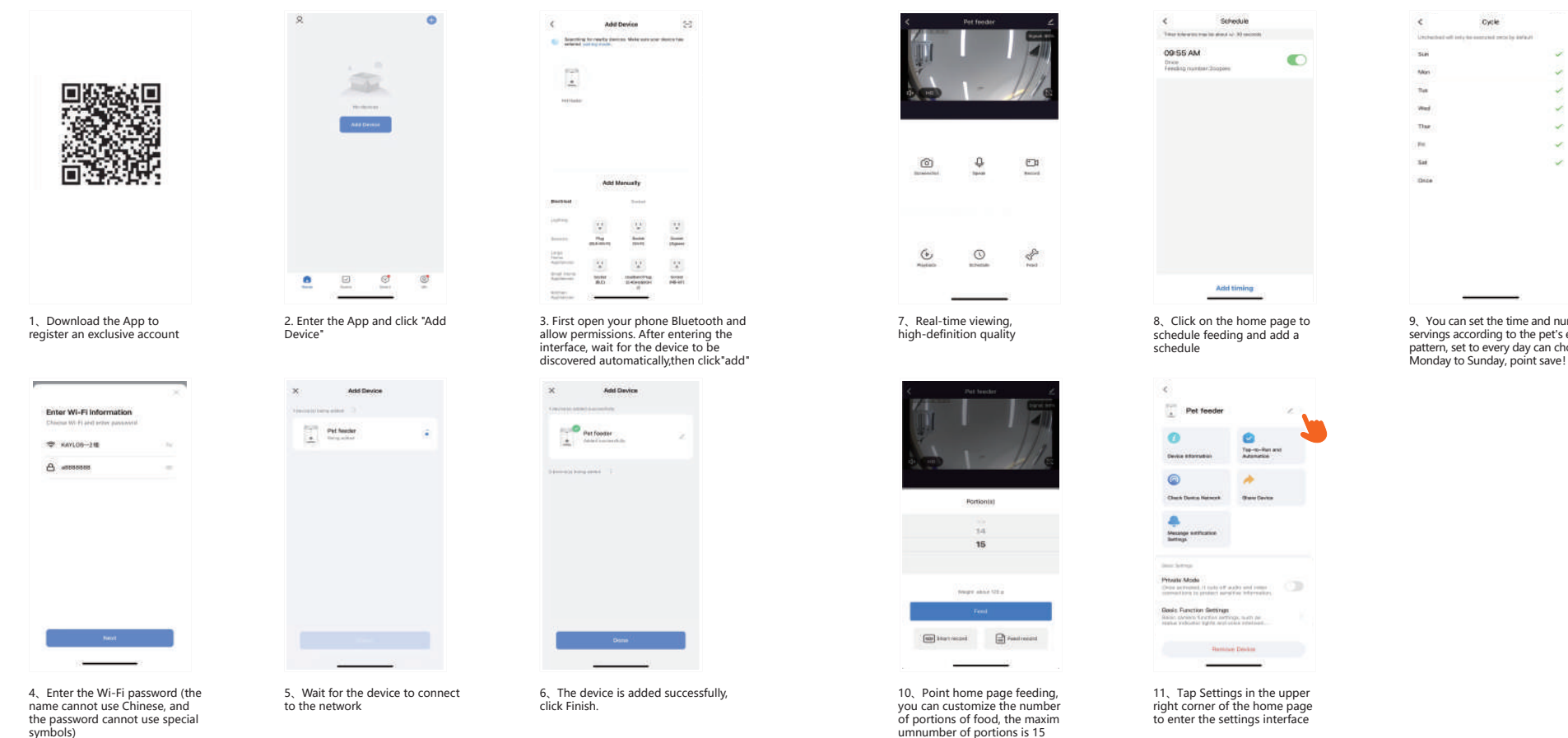


### 07 | Reset

- In the unlocked state, press and hold for 6 seconds to make a "di" sound, and the device will restore the factory settings, network information, feeding schedule, feeding records, etc.
- The network can be reconfigured after reset.



## Smart Life APP Specific Operations



## Simple Troubleshooting

### Programs for problem solving

- Q: App can't be displayed properly**  
A: Please make sure that the environment where the device is located has a good network.
- Q: The App can't connect to the feeder**  
A: Please check if the Wi-Fi name and password are in Chinese or longer than 12 digits  
Please restart your phone, close the non-system software that starts automatically on boot, turn on the Bluetooth and positioning of your phone, and try to reconnect again.
- Q: The feeder does not dispense food properly or does not dispense food at all**  
A: Please check if there is too much grain in the food bowl or if it causes blockage of the grain passage, if so, please clean the grain passage and the grain outlet in time; when using battery power, please check if the battery is dead and if the battery is leaking.
- Q: Feeder display offline**  
A: Please check whether the distance of the feeder from your home router is more than 10 meters (effective distance of 10 meters); try not to separate walls in the middle, according to the characteristics of Wi-Fi, the Wi-Fi signal across the wall will drop sharply, and the connection appears to be unstable, which will lead to the device offline.
- Q: No response to power on**  
A: Please make sure the power is plugged in. If the check is correct and the device still does not power on normally, please contact your dealer or customer service in time.

## Cleaning Instructions

### Follow the steps to create a cleaning chart

- Remove the top cover and empty the grain drum of grain (make sure)
- Grasp the grain barrel by hand, hold the base and rotate it counterclockwise to remove the barrel
- Remove the bottom of the grain barrel
- Empty the food tray and remove the food tray
- Rinse in water or with food-grade detergent and air dry
- The base of the main unit can be wiped with a damp towel, do not rinse with water