

01 / Parts breakdown diagram

LISTA DE PARTES

- ① Lid
- ② Barrel Body
- ③ Water Pump
- ④ Filter
- ⑤ Filter Cotton
- ⑥ Water Guide Tube
- ⑦ Power Cord
- ⑧ Pipe Filter



①



②



③



④



⑤



⑥

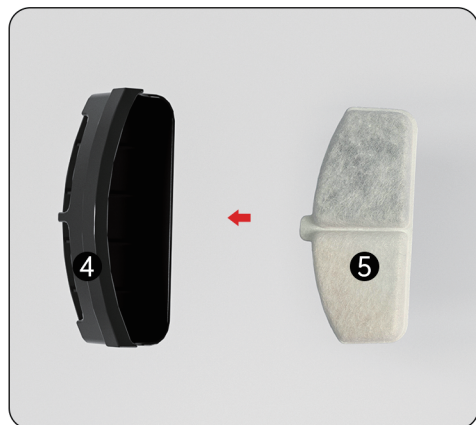


⑦

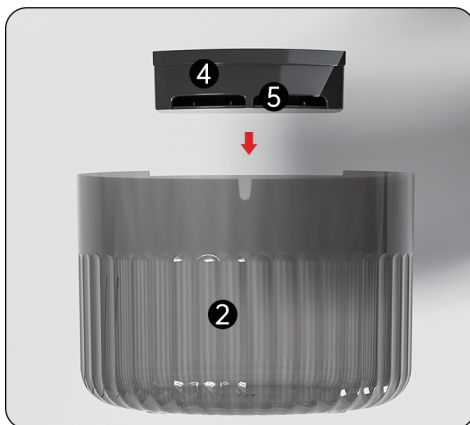


⑧

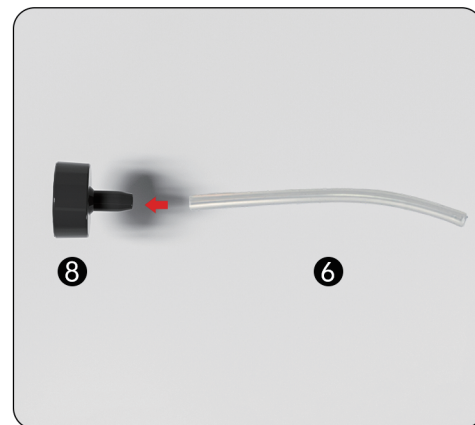
02 / INSTRUCCIONES



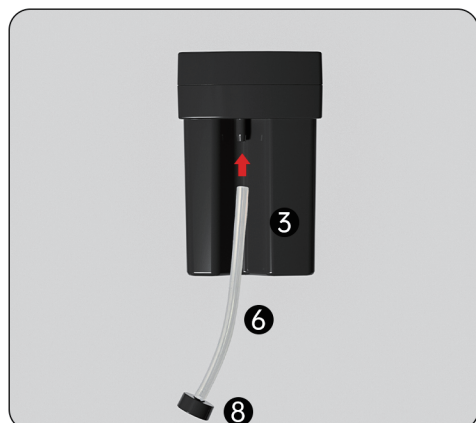
Step 1: Install the filter cotton onto the filter



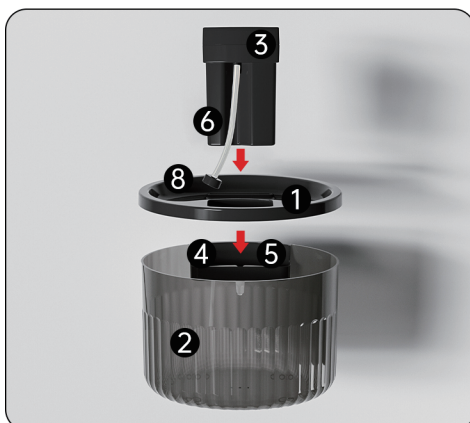
Step 2: Install the filter onto the barrel body



Step 3: Install the water guide tube onto the pipe filter



Step 4: Install the water guide tube onto the water pump



Step 5: Insert the water pump through the lid and install it onto the barrel body



Step 6: Install the power cord, and it's ready to use

Basic parameters:

- Wireless Smart Water Dispenser
- Product Dimensions: 20×20×16cm
- Material: ABS+PP
- Executive Standard: Q/YYP001-2024
- Capacity: 3L
- Net Weight: 420g
- Rated Voltage/Current: 5V/1A
- Battery Capacity: 2500mAh/5000mAh

Indicator Light Description:

